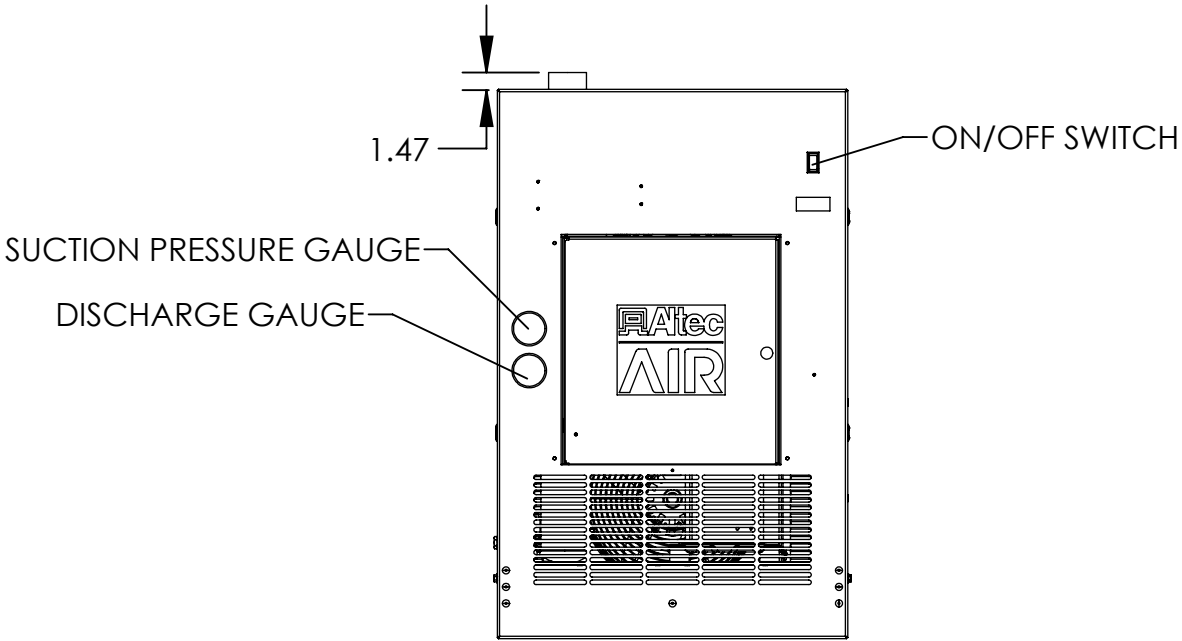
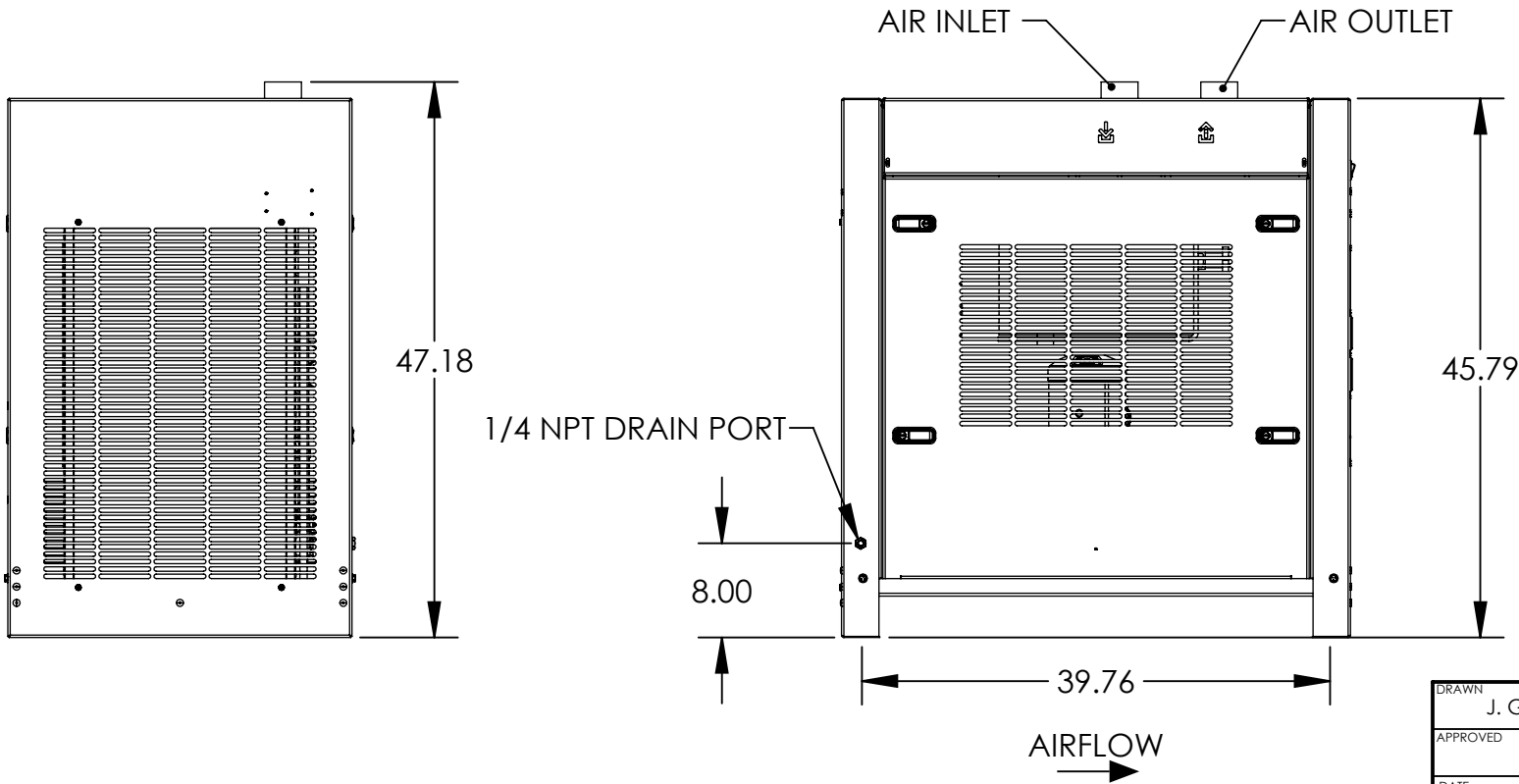
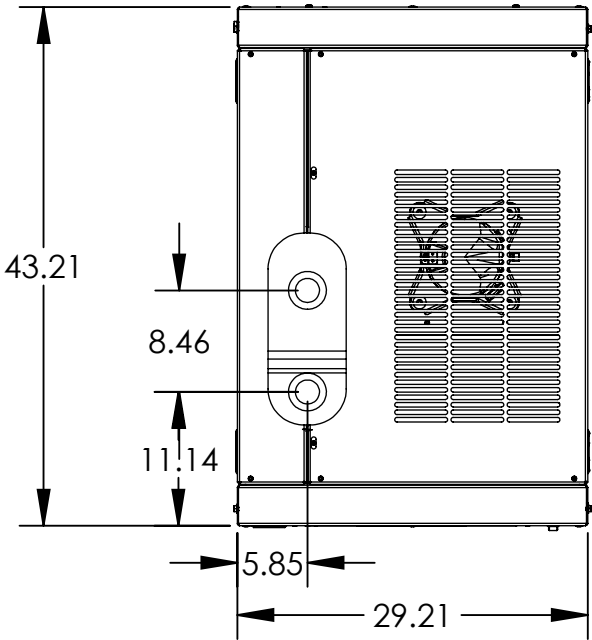
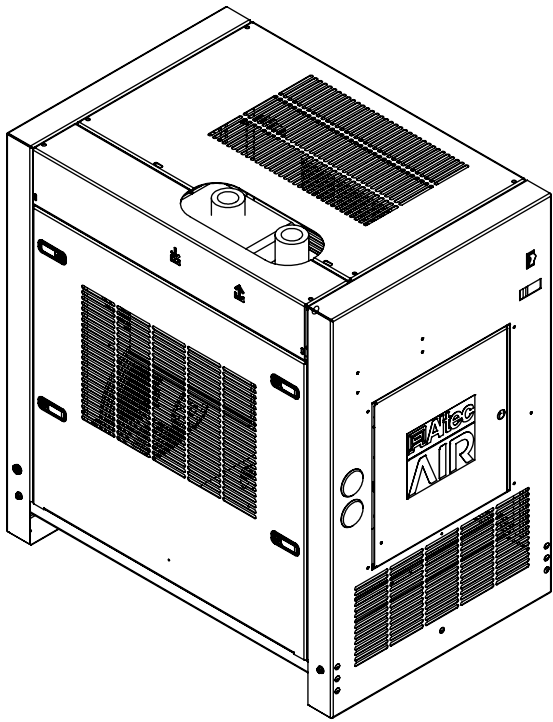




MODEL	RAD-0500A-3
VOLTAGE	230V-3PH-60HZ
RLA	10.3
LRA	55
MCA	10
MOP	25
COMPRESSOR HP	3 -1/2
COMPRESSOR	SCROLL
REFRIGERANT	R449A
REFRIGERANT CHARGE (OZ)	88
MAX INLET AIR TEMP (F)	140
MAX INLET AIR PRESSURE (PSI)	232
MIN/MAX AMBIENT TEMP (F)	45/120
REFRIGERANT PRESSURE LOW/HIGH (PSI)	181/450
INLET/OUTLET PORT (NPT)	2
WEIGHT (LB)	475



DRAWN J. GAMBLE	UNLESS OTHERWISE NOTED, TOLERANCES ARE: FRACTIONS: ±1/16 ANGLES: ±0°30' DECIMAL: .X = ±.06 .XX = ±.03 .XXX = ±.015 .XXXX = ±.0030 MACHINED SURFACES: 125 MICRINCHES THESE TOLERANCES DO NOT APPLY TO BASIC DIMENSIONS.		<div> 226A COMMERCE ST, BROOMFIELD, CO 80020</div>				
APPROVED -							
DATE 10/20/2022	DO NOT SCALE THIS PRINT, REMOVE ALL BURRS & SHARP EDGES. ALL DIMENSIONS ARE IN INCHES. CAD SOFTWARE: SOLIDWORKS. DRAWING DIMENSIONED TO ALTEC STANDARD: CDS-0007.		TITLE: DRYR-REFRIG; NON-CYCL; 500 SCFM; 230V/3PH; 60 HZ				
MATERIAL							
FINISH	CONFIDENTIAL: This drawing and its contents are the proprietary and confidential information of Atec Industries, Inc. and are not to be reproduced, copied or publicly disclosed. If this drawing is provided to someone outside Atec, it is done so for the limited purpose of assisting that recipient with a technical or product issue. In receiving this drawing, the recipient agrees to maintain it in confidence and not to use it beyond the purpose previously stated. Recipient agrees not to reproduce, copy, or publicly disclose this drawing and its contents.		SCALE	WEIGHT	SIZE	NUMBER	REV
			1:16		2	100520491	C